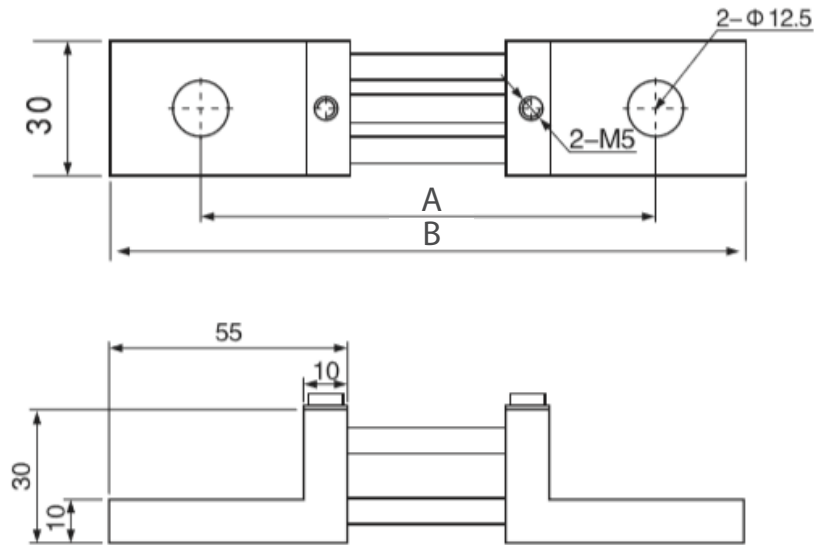




# SHUNT: 200A - 300A



200A - 300A		
	60mV	100mV
A	105	150
B	145	190

CURRENT	ACCURACY	VOLTAGE
200A 250A 300A	0.5%	60mV - 100mV

## ORDER CODE

Example:

**1A - 20060 - 05**

1A: with screw

200: 200Amp

60: 60mV

05: accuracy 0.5